



6 DECEMBER 2021

TERM 4 WEEK 10

## PRINCIPAL'S NEWS



Dear Parents and Caregivers,

### The End of 2021

Over these next two weeks we will be holding many of our end of year functions and celebrations... and it's so wonderful to be keeping most of these events as normal as possible under Level 3 restrictions. We are all upset and disappointed that we are unable to invite parents and carers to be on school grounds for these events, however we will be using the wonderful world of technology to connect you as best we can. Many of these events will be recorded for parents and a link emailed to enable you to view.

### Industrial Action

**Tomorrow, Tuesday December 7**, members of the NSW Teachers Federation have been directed by their union to take industrial action in a 24-hour strike.

As a result of the 24-hour strike scheduled for tomorrow, our school will be **providing minimal supervision of students tomorrow, Tuesday 7th December**. This means the cohort arrangements that have been in place this term will not be in operation on this day. However, our school will still operate in a COVID-safe manner in accordance with NSW Health guidelines.

We seek your assistance in making alternative arrangements for your child and thank you for your support and understanding.

### Important—Broken Bay

On Thursday 9th December, we are looking forward to a fun filled day at Broken Bay. This will be a day where the students can continue to build relationships, while developing teamwork and leadership skills. If you have not already returned the permission note please return it ASAP and ensure you have registered your child on line. All students **MUST have written permission and online registration to attend**. Registration closes today, Monday 6th December.

Thank you everyone for your quick responses at this busy time of year.

### Presentation Day

Our Presentation Day Assembly will be held on Tuesday 14th December. We are excited to celebrate the achievements of students on this day. A letter will be coming home shortly, for those students who will be receiving an award on the day.

As communicated previously, due to COVID restrictions, parents and visitors are unable to attend this event. We will endeavour to record the assembly and send a link home for parents to view the assembly as soon as we can.

### End of Year Concert

The end of year concert took place today. All the students performed in a class play and dance, showcasing their creative talents. The students did an amazing job and we look forward to sharing this with you via a video link shortly.

## CALENDAR

### Week 10

Mon 6 Dec	End of Year Concert
Tues 7 Dec	Year 6 Farewell
Wed 8 Dec	Mini Fete Return P&C Raffle Tickets
Thurs 9 Dec	Broken Bay K-6
Sat 11 Dec	P&C Trivia Night

### Week 11

Mon 13 Dec	Kindergarten Orientation
Tues 14 Dec	Presentation Day Assembly CAP Concert
Thurs 16 Dec	Last Day of Term 4

### 2022

Tues 1 Feb	Years 1-6 begin lessons Kinder Best Start assessment
Wed 2 Feb	Kinder Best Start assessment
Thurs 3 Feb	Kindergarten begin lessons



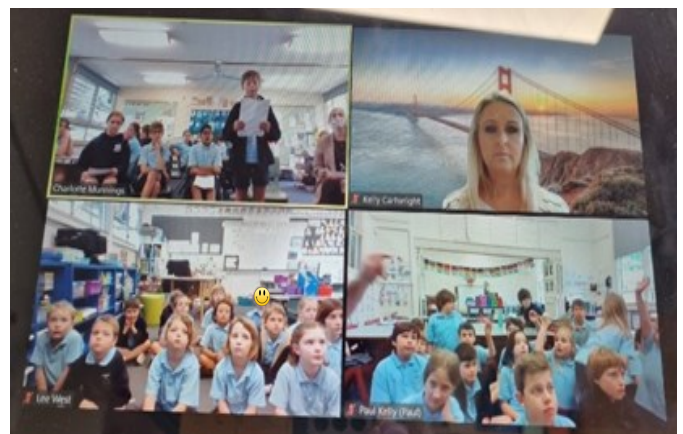
## End of Year Concert





## Leadership Speeches

Over the last few weeks, students at Brooklyn PS have been running for student leadership positions for 2022. All candidates presented themselves with confidence, outlining the qualities that would make them a good school leader, such as being a positive role model, encouraging school spirit and embodying the school beliefs and values. Successful candidates for Student Leadership positions in 2022 will be announced at Presentation Day next week.





## **BPS Public Speaking Competition**

Brooklyn PS students celebrated the 2021 Public Speaking competition by listening to the seven grade finalists. The theme this year was Friendship. Our finalists gave their Friendship speeches to an appreciative audience, providing their own interpretations on what makes a good friend and passing on some useful tips for us all. Congratulations to Frankie (Kindergarten), Billie (Year 1), Juliette (Year 2), Aston (Year 3), Rory (Year 4), Nimindi (Year 5) and Edie (Year 6) on their efforts this year.



## 2022

We are currently developing plans for the 2022 school year. This is a complex process, and it is important that we have accurate information to make decisions. We are enrolling Kindergarten children for 2022, now. If you or a friend/neighbour, have not yet submitted enrolment forms, please make this a priority.

If your child/ren will not be attending BPS in 2022, please notify the office in writing asap. Please note this does not include students who are moving from Year 6 into Year 7 in 2022.

## Staffing 2022

I would like to confirm staffing arrangements as we move into 2022. We welcome back Charlotte Munnings, Paul Kelly and Nicole Biviano, who will be continuing on at Brooklyn PS next year.

I also have the pleasure of announcing that Barb Lawrie was the successful candidate by merit selection for the position of School Administrative Manager when it went to advertisement earlier in Term 4.

I warmly welcome back all Brooklyn PS staff for 2022 and am excited for a wonderful year of learning ahead.

## Reports

Teachers are diligently working on student reports. These will be sent home with students by the middle of next week.

## Changes to School Development Days in 2021

At the commencement of 2021, there were amendments to our School Development Days (SDD's). These amendments impact Term 1 and 4 only. As a result of the changes there will no longer be two Staff Development Days at the end of Term 4. Instead, there will be two Staff Development Days at beginning of each school year. Therefore, the last day of school for all students in 2021 is **Thursday 16 December 2021**.

The 2022 school year will commence with two Staff Development Days. **Therefore, for students in Years 1-6, the first day of school for 2022 will be Tuesday 1st February.** Kindergarten students will complete their Best Start assessments on Tuesday 1st and Wednesday 2nd February. **Kindergarten's first day of school will be Thursday 3rd February.**

## Uniform Shop—Last days to order!

To ensure that you have your school uniform ready for Day 1 of 2022, it is essential to have your online orders processed asap. The uniform shop will be closed for the duration of the school holidays and will not open until the beginning of 2022. Orders and payments are taken via online shop:

<https://brooklyn-pc-association.square.site/>

## No Supervision before 8.40am

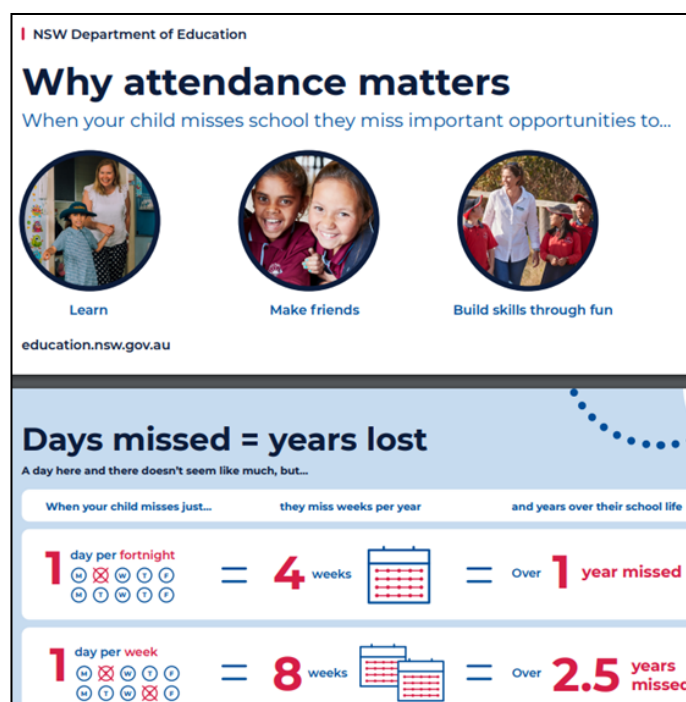
There has been an increase in the number of students arriving before 8:40am each day. Students are not to be at school before 8:40am unless they are attending HRCC. There is no supervision of students before 8.40am. Please be respectful of this to ensure your child/ren are safe at all times.

## School Travel for 2022

School Travel for 2022 Students who need a School Opal card or travel pass for 2022 can apply now. Please read the information attached at the end of the newsletter to find out more about School Travel 2022.

## Student Attendance

Every day counts! Regular attendance helps students develop a sense of belonging, maintain friendships and increases engagement in learning. All students in Kindergarten to Year 6 are required to attend school until **Thursday 16 December 2021**, the last day of teaching for 2021.



Kelly Cartwright  
Principal

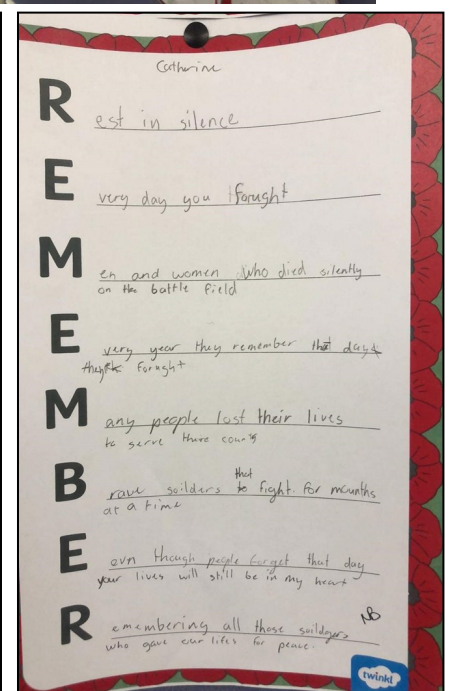
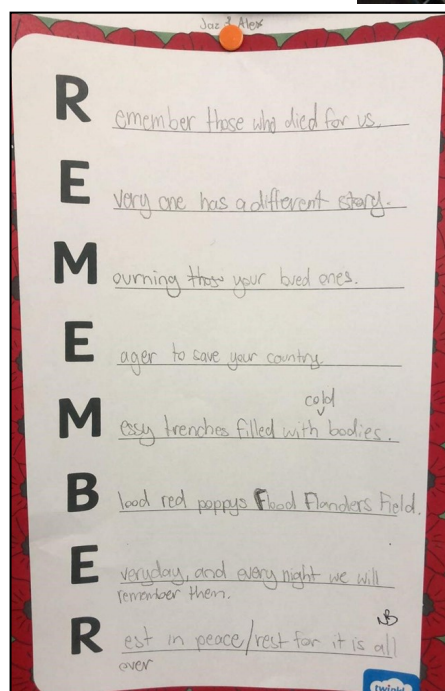
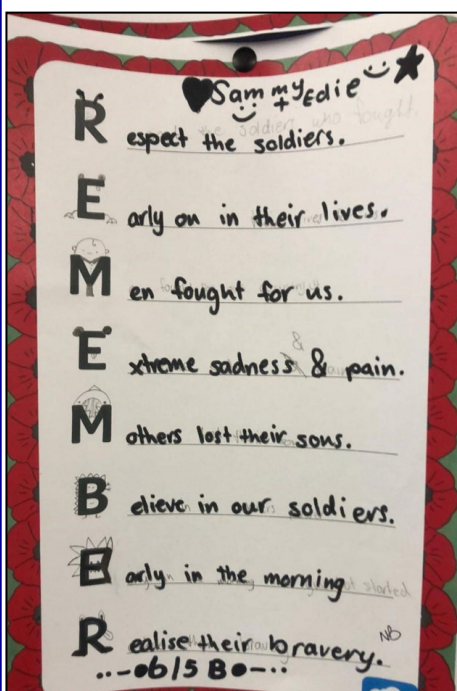
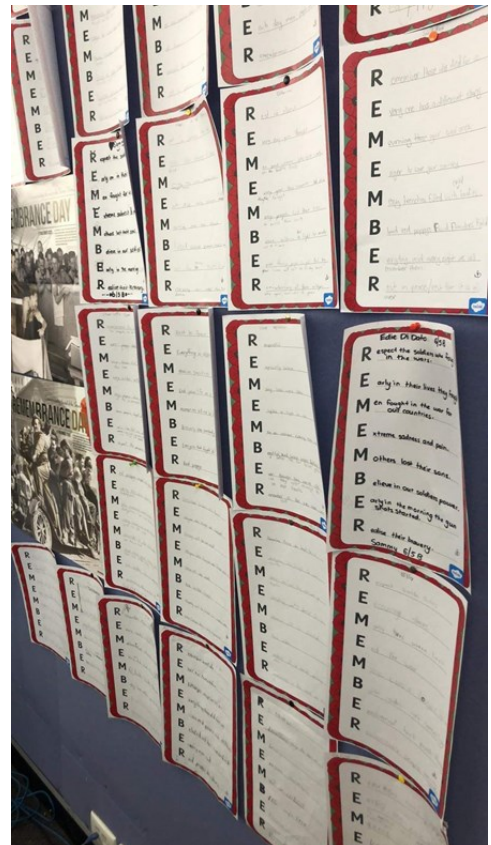


## What has been happening in the Library

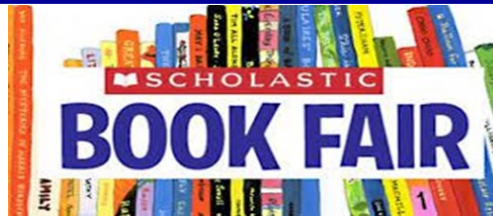
In the Library this term, we have been talking about Courage as part of our Personal Health and Development Bounce Back program. Students have explored what it means to be brave and what it takes to be courageous. They shared how they have been brave in the past and talked about people they know who are courageous.

As part of our learning about Remembrance Day, we talked about the different conflicts around the world and why it is important to remember the people who have and continue to keep our country safe.

Students in 2-6 created thoughtful acrostic poems and students in K-1 drew pictures and wrote about people in their lives who are courageous.







The Brooklyn Public School Scholastic Book Fair was a huge success this year! Each book, eraser, sharpener and pen sold helped raise money for BPS and while the final tally is still to come in, we saw so many fabulous new and interesting books go home with families.

Thank you to everyone who purchased at the Book Fair and we cannot wait to see what Scholastic bring us next year!





Earlier in the year, BPS students were able to vote on the KOALA Book awards - Kids Own Literature Awards. Early this term, we were able to watch some of the winners announced for the categories of Older Readers, Younger Readers and Picture Books. It was great to see some of the titles and authors we voted for receiving recognition by the kids of Australia!

We have been lucky enough, thanks to generous P&C donations, to obtain some of these winning titles for our school library! Keep an eye out for them in the library!



For more information on the awards or the winning titles, visit: <https://www.koalansw.org.au/winners>



## Community News

## DISCLAIMER

We sincerely thank our advertisers for their support of our school. While Brooklyn Public School is selective in the advertisements it runs, parents are advised to use their own discretion in supporting these services.

### Brooklyn Public School P&C Yearly Fundraiser!

Support the school whilst having a great night out - meet other parents and reconnect post Covid!

Every year the P&C holds a fundraiser to out do the last... this helps them to support the school in paying for Excursions, PSSA, Technology, Books and Stationery and Learning Support.

Transport back is included as well as dinner and the entertainment will have you in stitches.

Hope to see you there.

**BROOKLYN PUBLIC SCHOOL P&C 90s TRIVIA NIGHT**

Bid on Bling auction items and Da Bomb raffles

**WE LOVE THE 90s**

Forget Covid, forget the Noughties and escape for 1 night to all that was good in the 90s!

Saturday the 11th December 2021 3pm - 8pm  
At Dangar Island Bowling Club.

**BE THERE OR TALK TO THE HAND.**

Book here 

Platinum Sponsor  
Riverfront Real Estate 

*Please return all raffle books, sold and unsold, along with money to the school office by **Wednesday 8 December 2021.***

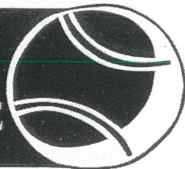
Brooklyn P&C Committee

#### \* NUT MINIMISATION \*

Please support our young students who live with life-threatening allergies to nuts by refraining from sending your child to school with nut-based food products like Nutella or Peanut Butter.



# BEROWRA DISTRICT TENNIS COACHING CENTRE



ABN NO. 87690456080

## **B.D.T.C.C. TENNIS CAMPS 2022**

**Week 1:** Monday 17 January - Friday 21 January: \$195

**Week 2:** Monday 24, Tuesday 25, Friday 27 January: \$120

**Time:** 9-3pm [even if wet]

*Friday is Party Day!*

**Cost:** Daily rate: \$50 Half day: \$35

*Wednesday is Icecream Day*

**NEW Location:** Brooklyn Oval Tennis Courts, Brooklyn Rd, Brooklyn. 2083

**Enquiries:** Please phone Trevor: 0408977787. or Gilly: 0402110904

Bookings can also be made via facebook: Berowra District Tennis Coaching Centre.

Do you want to make a difference in the life of a child?



## Local foster carers needed

The NSW Department of Communities and Justice is seeking people in your area to become short-term and crisis foster carers in order to provide a home for children and young people aged anywhere between 0-18 years-old. We are also interested in people who can care for siblings.

Foster carers come from all walks of life and their families reflect the wider community we live in. They can be single, in a relationship, identify as LGBTQ+ and be with or without children of their own.

Aboriginal, Torres Strait Islanders and people from culturally diverse backgrounds are also encouraged to apply. All carers receive training, ongoing support and financial assistance. If you are interested in making a difference in the life of a child, please call 8303 7644 or email our Foster Care Team:



Communities  
& Justice

CAPSMetroCentral@dcj.nsw.gov.au

**Lifeline** Saving Lives  
Crisis Support. Suicide Prevention.

## GIANT BOOK FAIR



70,000  
books at  
great prices

Huge scope  
of fiction &  
non-fiction

CDs, DVDs  
& video  
games

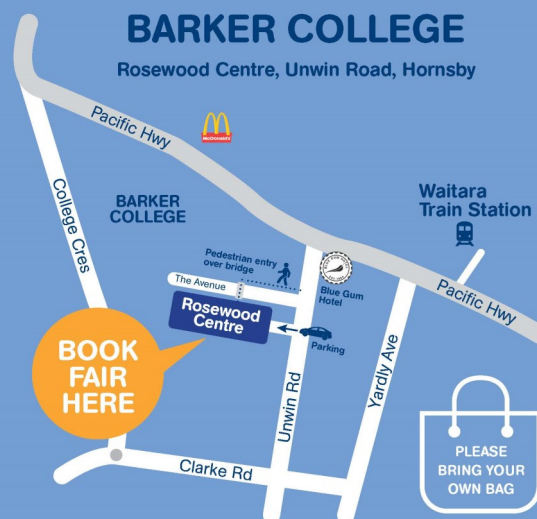
Easy-access  
categories  
to explore

**Sat 11 to Mon 13 December**  
**8am - 5pm**  
**Barker College, Hornsby**

WITH THANKS TO  
**Barker**  
Inspiring Tomorrow

## BARKER COLLEGE

Rosewood Centre, Unwin Road, Hornsby



Unfortunately, we can't accept book donations at the Book Fair. Please visit our website to see donation locations.

Sign up to receive our Book Fair newsletter

Scan the QR code and be among the first to know about our upcoming Book Fairs.



lifeline2h.org.au • Tel: 02 9498 8805

f @lifeline2h



## School Travel for 2022



### 2022 school travel applications are now open

Students who need a School Opal card or travel pass for 2022 can [apply](#) now. A new application will need to be submitted if they are applying for a school travel pass for the first time, or if they are requesting an additional travel entitlement as a result of a new shared parental responsibility situation (e.g. joint custody).

Students who change address, school, campus location, or who have repeated a year or received an expiry notification from Transport for NSW for their school travel entitlement should [renew or update](#) their details before **the end of term 4**. This will ensure that schools can endorse applications and current entitlements are updated and remain valid. School Opal card holders will have the changes applied to their existing card.

If a student's distance eligibility has changed based on their grade the system will automatically update their entitlement if they meet the new criteria. If they do not meet the new [eligibility criteria](#), they will receive an expiry notification via email.

Students who have an entitlement approved under a medical condition that is due to expire will receive a notification advising them to re-apply.

[Term Bus Pass](#) holders will receive a notification to re-apply.

Students in the Opal network applying for an Opal card (including a Term Bus Pass) for the first time will receive their Student Opal card at their nominated postal address. Cards will be mailed out from January 2022.

Students living in rural and regional (R&R) areas should receive their travel pass at the start of the new school year from their nominated transport operator. It may come via the school or be sent directly to them at home. **Note:** some R&R operators do not issue travel passes. Students/parents should confirm with their nominated operator if they do not receive a pass.

### School Student Transport Scheme site change

On 1 October 2021 the School Student Transport Scheme (SSTS) information and application portal was moved to [transportnsw.info](https://transportnsw.info). This will assist families to find all their travel information in the one place.

### Travel from Term 1 2022

We ask that parents plan ahead and make sure their child knows which service/s to use and has a valid ticket to travel; either a School Opal card or Child/Youth Opal card (within Greater Sydney) or a School Travel Pass (outside Greater Sydney), from the start of the school year.

Applications for the School Student Transport Scheme (SSTS) open at the start of Term 4 2021 for travel in 2022, so parents/students can [apply](#) or [update](#) details early and be ready for the start of the new school year.

Most students using the Opal network will not need a new Opal card and can continue travelling on their existing card each year.

The start of the year is a difficult period for local bus operators, and students travelling without a valid ticket make service planning and operations increasingly difficult.

We recognise that for some families last minute changes to school enrolments mean they may not have a School Opal card or Travel Pass for the start of term. In the Opal network, we strongly encourage these families to have their children travel on a Child/Youth Opal card until they receive their valid School Opal card. If outside Greater Sydney, parents should contact their [local bus operator](#) to discuss their travel needs.

Bus operators are flexible and understanding, particularly at the start of the school year, and will ensure students can travel safely to and from school. But to best support our operators we encourage all students to have a valid ticket, as early as possible, from the start of the school year.

Please also remember that students using Opal cards must tap on and tap off in line with the [Student code of conduct](#) and [Opal terms of use](#).



Further information can be found at [transportnsw.info/travel-info/using-public-transport/school-travel](https://transportnsw.info/travel-info/using-public-transport/school-travel)  
Enquiries can be submitted at [transportnsw.info/contact-us/feedback/passes-concessions-feedback](https://transportnsw.info/contact-us/feedback/passes-concessions-feedback)