



25 OCTOBER 2021

TERM 4 WEEK 4

PRINCIPAL'S NEWS



Dear Parents and Caregivers,

Last week we saw the return of our youngest students (Kindergarten and Year 1) to their classroom. No tears, no hesitation, they just walked straight in and knew exactly where to go and what to do. Thank you for preparing them so diligently. You did a tremendous job and we are so grateful.

Today we welcomed back the students from Years 2-6. It is wonderful to see the school full again and hear the laughter and happiness in the playground and classroom. Students have settled in well and are excited to be back in the company of their friends and teachers.



COVID Update

Just a reminder that students must not attend school if they are sick, even with the mildest cold or flu-like symptoms. Any child displaying any symptoms will be sent home and will not be able to return until they have a negative test result that has been sighted by the school office. They must also be symptom free for 3 days. In the absence of a negative test result, students will not be able to return to school for 10 days. In circumstances where there is a medical reason for recurrent symptoms (e.g. hay fever), a letter from the GP is sufficient to negate the requirement for a negative test.

Where a person has previously tested positive for COVID-19, NSW Health will provide them with a medical clearance that allows them to return to school or work.

2022 Plans

We are currently in the process of developing plans for 2022. This is a complex process and it is important that we have accurate information in order to make informed decisions.

If your child/children will not be attending BPS in 2022, could you please email the school office to let us know. This does not include students who are moving from Year 6 into Year 7.

CALENDAR

Week 4

Wed 27 Oct	Kindergarten Transition via Zoom 9.30-10.30
------------	--

Week 5

Wed 3 Nov	Kindergarten Transition via Zoom 9.30-10.30
-----------	--

Week 6—Book Fair Book Viewing Mon-Thurs

Week 7—Book Fair Book Purchasing Mon-Thurs

Week 10—Sat 11 Dec—P&C Trivia Night

At this stage we are welcoming 13 new Kindergarten students in 2022 and 13 Year 6 students will be leaving for High School. The DoE is kept regularly informed of our anticipated numbers and our staffing will be based on the information I give them. Therefore, it is vitally important that the community keep the school informed of intentions not to return to our school in 2022.

Lunch Orders

As part of our COVID safe procedures, for the remainder of the year we are adjusting our lunch order operations. Homer's Kitchen will resume the lunch order service from today (25th October), now that all children have returned to face-to-face learning on site. Orders will need to be placed in a brown paper bag and put in the lunch order basket on Mondays or Fridays before school as is the usual practice. Orders when they arrive at lunch time, will now be distributed to each class in their room before the bell for the lunch break.

Device Loans

As students have returned to learning on site, please remember to return all loaned devices and charging cords to ensure we have enough devices for students to use once back at school. All borrowed items must be brought back via the school office by students, to ensure they are checked and signed back in, by our friendly administrative staff.

Cancelled 2021 Activities

As a result of the restrictions and limitations to programs and activities, in Semester 2, we will be reimbursing some families' money paid. Families who are owed money by the school due to cancelled activities, and have an ongoing association with the school in 2022, will have the funds carried forward as a credit.

If your association with our school ends in 2021, we will provide a reimbursement. To facilitate this action please contact Barb Lawrie in the office on 9985 7315.

Reports

With students Learning from Home for a significant period of Semester 2, we have prepared a checklist to allow parents and carers a chance to contribute to the Semester 2 student reports. We encourage you to take this opportunity to sit down with your child/ren and reflect on their time learning from home.

This checklist was emailed home to families last week. Please complete this checklist and return to your child's classroom teacher by the due date. The checklist is attached with the newsletter email.

Year 6 Leadership Elections

Student leadership elections are fast approaching for 2022. Leadership opportunities at Brooklyn Public School allow our students to demonstrate their dedication and commitment to our school and students.

Attached to the newsletter email is an outline of the election process and an expression of interest form which needs to be completed and returned to school by students wishing to be considered for leadership positions in 2022. **We have extended the deadline for the Expression on Interest until the end of this week (29th October 2021).**

Intention to Apply for Year 7 Placement in a Selective High School in 2023

Selective high schools cater for academically gifted students with high potential who may otherwise be without sufficient classmates at their own academic standard. Selective high schools help these students to learn by grouping them with students of similar ability, and by using specialised teaching methods.

If you would like to have your child considered for Year 7 selective high school entry in 2023, you need to apply on the internet using a valid email address (not the student's email address).

The Selective High School Placement Test will be held on Thursday 10 March 2022.

Detailed instructions on how to apply and the link to the online form will be available in early-October 2021 at <https://education.nsw.gov.au/public-schools/selective-high-schools-and-opportunity-classes/year-7>.

Applications open on 19 October 2021 and close on 17 November 2021. You must apply before the closing date.

You must submit only ONE application for each student.

Intention to apply letters were emailed to Year 5 parents last week. A copy of this letter and further information can be found emailed with this newsletter.

Opportunity Class Placement Test

Due to the ongoing COVID restrictions, this year's Opportunity Class Placement Test has been rescheduled to **Wednesday, 17 November 2021**. It has been agreed by the Minister that the test will be administered as a computer-based test in a process similar to the Check In assessments.

The change of date will require students attending NSW public schools to be tested at their own schools with teaching staff administering the test. This approach will ensure placement of students in opportunity classes on Day 1, Term 1, 2022.

Parents of OC applicants will receive communication directly from the High Performing Students Team with further information.

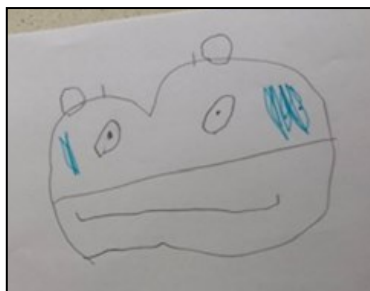
Kelly Cartwright
Principal

Kindergarten Orientation

Last Wednesday was a very special and exciting Zoom meeting as I was able to meet out incoming Kindergarten students for 2022. Unfortunately, due to the current circumstances and restrictions, we have been unable to run our usual face to face Kindergarten orientation program. We did manage to have a great time on Zoom, with a scavenger hunt, story and directed drawing activity. Some of our current Kindergarten students were also able to introduce themselves and share their favourite thing about Kindergarten.

Our remaining 2 Kindergarten orientation Zoom sessions will take place on Wednesday 27th November and Wednesday 3rd November at 9:30am.

Mrs West



Welcome Back 1/KW

Welcome back! Monday saw the return of 1/KW to the classroom. After what has been a long journey in Term 3 (and some of Term 4) of at home learning, I was so thrilled to see a class of beaming smiles enter the classroom Monday morning. We have had a wonderful week together, reconnecting and settling back in. Every student has worked extremely hard this week, settling back into the school routine quickly and seamlessly.



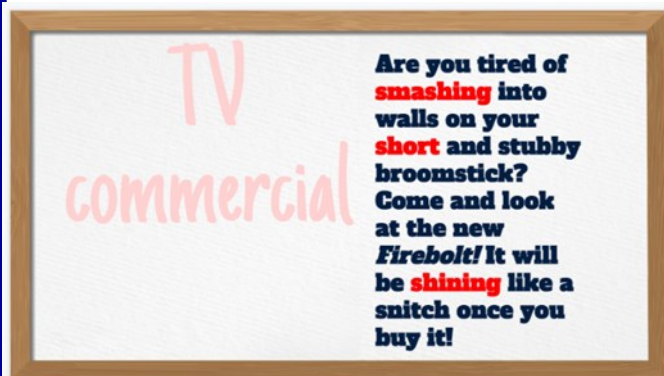
What has been happening in 4/3/2L

Class 4/3/2L have enjoyed another productive few weeks in Term 4, picking up where we left off in the learning from home environment. We again used the DET Learning from Home resources for writing, specifically in learning about personification (giving human characteristics to inanimate objects), symbols and their meaning, and public speaking and other curriculum content. The wealth of the DET's digital resources has made a positive impact on student learning outcomes and it shows in their work.

My eventful day continued

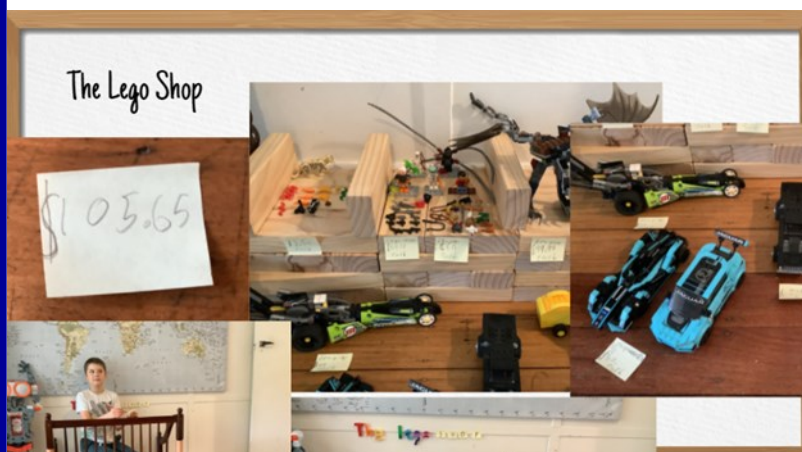
After I threw my ham and cheese toastie in the bin (the cheese was sour) I went to my duties as king of the world. I had much work to do: for one I had to get new lunch and two I had to write an important document on doughnuts. When I got back I remembered I had an emergency chicken sandwich, but when I opened my draw two thousand chihuahuas kicked down the door and started playing poker! I researched the law last year and that was an illegal game and you know what to do when you see an illegal deed being done... Join in!

Our spelling tasks included an activity grid with students demonstrating their understanding of their List words in a range of options, choosing one of their choice.



Towards the end of each week their Spelling Stories have provided us with endless amusing and creative short stories. One option was a TV commercial using persuasive writing to convince the reader to buy a product. 4/3/2L students have had the choice of producing their work directly to the daily slides or using their writing books and posting image of their work, as shown below.

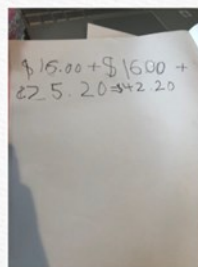
In mathematics, 4/3/2L students have been learning about financial mathematical concepts in the Number and Algebra strand, specifically in addition and subtraction involving numbers of two, three, four or more digits. We demonstrated our learning by creating shops with student choice of theme, using Australian dollars and cents with different budgets and asking a family member to go shopping. Students then added the customer's totals and generated a receipt as proof of purchase. Hopefully no lounge rooms were harmed in this process.



Year 2 students were given a budget of \$100, Year 3 had \$300, with Year 4 the big spenders with a budget of \$500. Discussions were held over Zoom meetings on extending the budget if necessary (the answer was yes). Theme options included a bookshop, Lego shop, toy shop, art gallery, cake shop, hardware store or a supermarket.

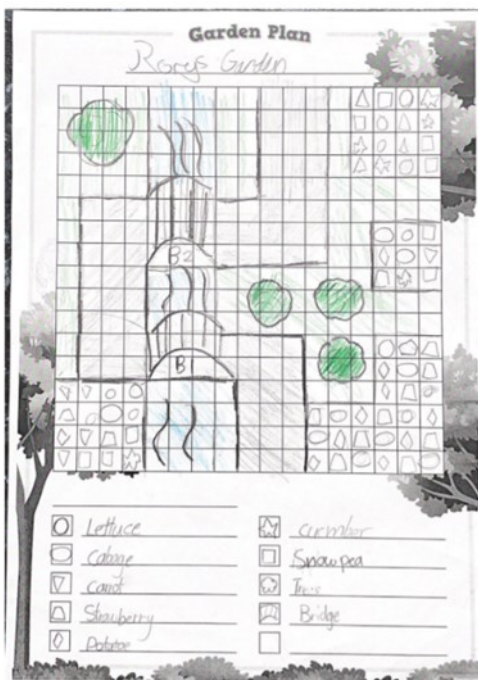


Shop pics:



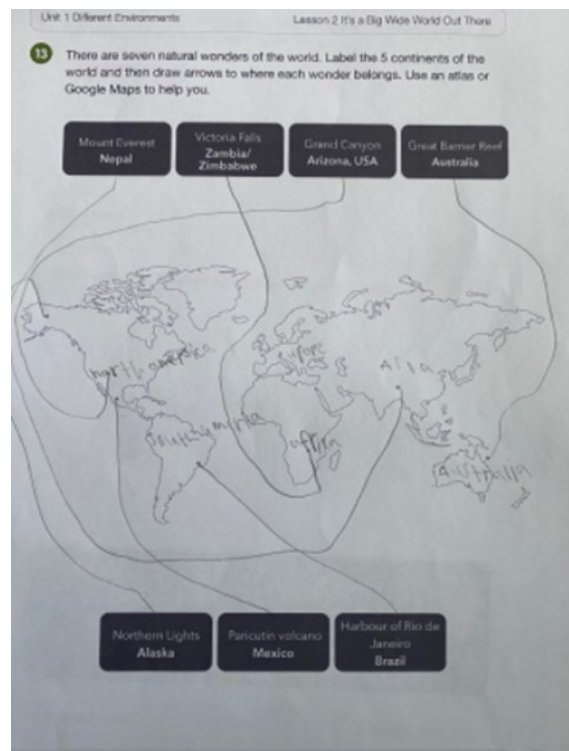
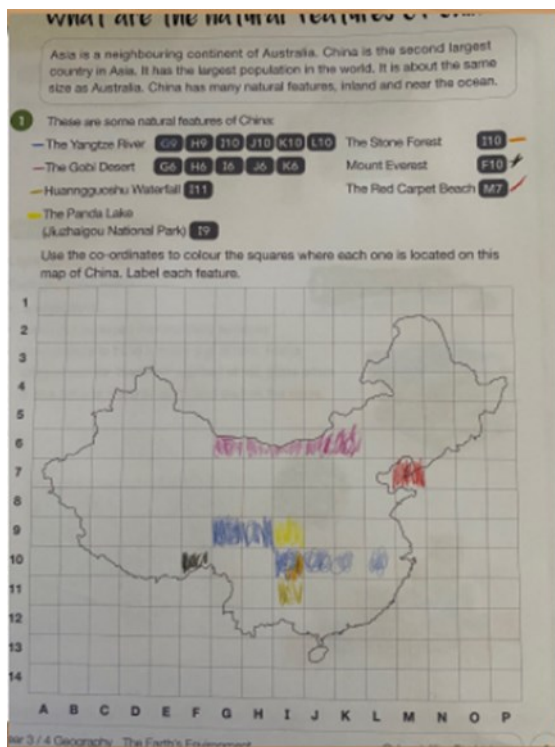
Students learned about using Australian currency when talking about whole numbers and decimal numbers, linking their experiences with trading, sorting, classifying and counting in an engaging home environment.

Other maths concepts in recent weeks involved an integrated Garden Design Project, drawing on skills in 2D shapes, area, perimeter, symmetry and addition, to design and create their own garden plan. The integration aspect draws on the combination of different mathematical concepts to consolidate student knowledge and develop their working mathematically skills.



Garden Tally		
Item	Tally	Cost
▽ Carrot	7	\$7
○ Cabbage	12	\$12
○ Lettuce	9	\$9
△ Strawberry	12	\$12
◇ Potato	7	\$7
☆ Cucumber	6	\$6
□ Spinach	8	\$8
☼ Tree's	4	\$40

Our Geography program has had a focus on the Earth's different environments, using our wonderful Inquisitive digital resource to investigate a number of countries and landforms. Some students studied the natural feature of China as part of Australia's engagement with Asia, a cross-curriculum priority. Other students looked at the seven natural wonders of the world, using an atlas or Google Maps or other resources in their research.



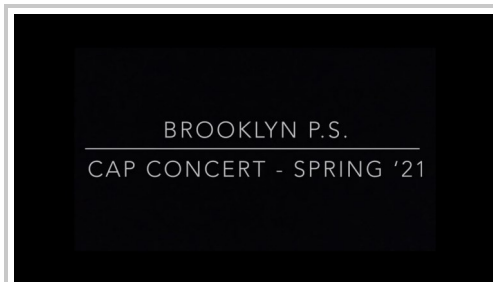
Class 4/3/2L have been doing the best work we could under the interesting circumstances of learning from home with a new teacher and over sixty class Zooms, in thirteen weeks of online learning. We are all looking forward immensely to working in person again in our spacious and beautiful classroom with the invigorating river breeze and the various outdoor learning spaces literally on our doorstep. It will be an exciting time for us.

Mr Kelly - Teacher 432L 😊

P&C Announcement



- **Term 3 CAP concert** private YouTube link: <https://youtu.be/K458nYy2Dj8>



[CAP Concert Spring '21](#) Welcome to the Brooklyn Public School Spring CAP Concert! We hope you enjoy it. Click SHOW MORE to see a clickable running order below; Welcome to the Brooklyn...youtu.be

- **Tote Bags** are still available for sale!

Orders: Via P&C Shop website <https://brooklyn-pc-association.square.site/>



TRIVIA NIGHT 2021 IS COMING!

We are excited to announce that tickets will go on sale **this week** for the 2021 **Brooklyn Public School P&C's 90's Trivia Night!**

Forget COVID, forget the Noughties and escape for 1 night to all that was good in the 90s!

Bid on Bling Auction items and Da Bomb raffles.

When: Saturday 11th December 2021

Time: 3.00pm - 8pm

Where: Dangar Island Bowling Club

Be there or Talk to the Hand!

Major Sponsor Riverfront Real Estate

Tickets will be on sale via the trybooking website later this week..... more information to follow !

Please contact the P&C on bps.pandc.association@gmail.com if you have any questions.

Brooklyn P&C Association

School Travel for 2022



2022 school travel applications are now open

Students who need a School Opal card or travel pass for 2022 can [apply](#) now. A new application will need to be submitted if they are applying for a school travel pass for the first time, or if they are requesting an additional travel entitlement as a result of a new shared parental responsibility situation (e.g. joint custody).

Students who change address, school, campus location, or who have repeated a year or received an expiry notification from Transport for NSW for their school travel entitlement should [renew or update](#) their details before **the end of term 4**. This will ensure that schools can endorse applications and current entitlements are updated and remain valid. School Opal card holders will have the changes applied to their existing card.

If a student's distance eligibility has changed based on their grade the system will automatically update their entitlement if they meet the new criteria. If they do not meet the new [eligibility criteria](#), they will receive an expiry notification via email.

Students who have an entitlement approved under a medical condition that is due to expire will receive a notification advising them to re-apply.

[Term Bus Pass](#) holders will receive a notification to re-apply.

Students in the Opal network applying for an Opal card (including a Term Bus Pass) for the first time will receive their Student Opal card at their nominated postal address. Cards will be mailed out from January 2022.

Students living in rural and regional (R&R) areas should receive their travel pass at the start of the new school year from their nominated transport operator. It may come via the school or be sent directly to them at home. **Note:** some R&R operators do not issue travel passes. Students/parents should confirm with their nominated operator if they do not receive a pass.

School Student Transport Scheme site change

On 1 October 2021 the School Student Transport Scheme (SSTS) information and application portal was moved to **transportnsw.info**. This will assist families to find all their travel information in the one place.

Travel from Term 1 2022

We ask that parents plan ahead and make sure their child knows which service/s to use and has a valid ticket to travel; either a School Opal card or Child/Youth Opal card (within Greater Sydney) or a School Travel Pass (outside Greater Sydney), from the start of the school year.

Applications for the School Student Transport Scheme (SSTS) open at the start of Term 4 2021 for travel in 2022, so parents/students can [apply](#) or [update](#) details early and be ready for the start of the new school year.

Most students using the Opal network will not need a new Opal card and can continue travelling on their existing card each year.

The start of the year is a difficult period for local bus operators, and students travelling without a valid ticket make service planning and operations increasingly difficult.

We recognise that for some families last minute changes to school enrolments mean they may not have a School Opal card or Travel Pass for the start of term. In the Opal network, we strongly encourage these families to have their children travel on a Child/Youth Opal card until they receive their valid School Opal card. If outside Greater Sydney, parents should contact their [local bus operator](#) to discuss their travel needs.

Bus operators are flexible and understanding, particularly at the start of the school year, and will ensure students can travel safely to and from school. But to best support our operators we encourage all students to have a valid ticket, as early as possible, from the start of the school year.

Please also remember that students using Opal cards must tap on and tap off in line with the [Student code of conduct](#) and [Opal terms of use](#).



Further information can be found at transportnsw.info/travel-info/using-public-transport/school-travel

Enquiries can be submitted at transportnsw.info/contact-us/feedback/passes-concessions-feedback

Join us on facebook

@BrooklynPublicSchoolPancAssociation

Stay up dated with all things you need to know about school happenings

Our **little** school by the river is extremely well supported by local businesses, the community and of course the parents and teachers. Because of this continued support, **Brooklyn Public School** is able to offer it's students the same opportunities (**and more**) that are offered at any larger school.

STAYING CONNECTED IS ALL WE CAN DO.

Email: bps.panc.association@gmail.com

Be a P&C member for \$2.00

Join online @: <https://brooklyn-pc-association.square.site/>

Parents and Citizens Association

Supporting our school is supporting our kids.



* NUT MINIMISATION *

Please support our young students who live with life-threatening allergies to nuts by refraining from sending your child to school with nut-based food products like Nutella or Peanut Butter.